

## ***Testing For Imported Seafood***

### **Fluoroquinolones and Chloramphenicol in Imported Seafood For Release Testing**

Recently, residues of fluoroquinolone antibiotics in frozen filets of fish from China have been found. This has prompted the Louisiana Department of Agriculture, Alabama Department of Agriculture and Industries and possibly other States to stop sale of all seafood products imported from China until testing is performed to show the product is free of residues. **ADPEN** is a world leader in food safety testing and employs state-of-the-art LC/MS/MS instrumentation to achieve the testing levels required by FDA and above State Agencies.



The State of Louisiana also requires all shellfish products from China, including crawfish, crab, and shrimp, must be tested for both chloramphenicol and fluoroquinolone residues.

**A zero tolerance policy has been declared, therefore there should be no residues present.** Any residue at or above the limit of quantitation (LOQ) of the analytical methodology approved by the various States is treated as adulterated food.

#### **Analytes to be Tested**

The following compounds are tested by LC/MS/MS with approved methodology:

**Fluoroquinolones:** Enrofloxacin, Ciprofloxacin, Difloxacin and Sarafloxacin

**Chloramphenicol**

#### **Current State Testing Requirements**

**ALABAMA:** Quantitation Limit (LOQ) for fluoroquinolones is 1 ppb, and for chloramphenicol is 0.3 ppb. Shellfish is being tested for fluoroquinolones and chloramphenicol by the State. Testing for chloramphenicol is at the clients option.

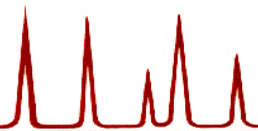
**LOUISIANA:** LOQ requirements for fluoroquinolones is 5 ppb, and for chloramphenicol is 0.3 ppb. Fish testing requirements is fluoroquinolones. Shellfish requirements are fluoroquinolones and chloramphenicol.

**MISSISSIPPI:** LOQ requirements for fluoroquinolones is 0.5 ppb. Chloramphenicol is 0.3 ppb.

#### **Sampling**

##### **Fish**

For imported testing of fish as required by Alabama, Louisiana, Mississippi and Arkansas, collect one case (minimum 12 lbs). A composite of 12 fish filets from one case of each lot will be prepared at the lab. (sampling requirements may be different in some cases for various states and FDA).



## Shellfish

For imported testing of shellfish (shrimp, crawfish) as required by Alabama, Louisiana, Mississippi and Arkansas, 12 packs (each pack minimum of 1 lb). A composite of 12 packs will be prepared at the lab.

For imported testing of crab or crabmeat as required by Louisiana as follows:

- i. Two samples are to be taken of crab or crabmeat that is in lots of 50 pounds or less.
- ii. Four samples are to be taken of crab or crabmeat that is in lots of 51 to 100 pounds.
- iii. Twelve samples are to be taken of crab or crabmeat that is in lots of 101 pounds up to 50 tons.
- iv. Twelve samples for each 50 tons are to be taken of crab or crabmeat that is in lots of over 50 tons.

Consult the Department of Agriculture of the State you are sampling from or targeting for distribution for the latest requirements.

## Shipping

These samples should be properly labeled (, sealed and a lab request form (chain of custody) is used to document collection and transfer to the lab, which can be printed from our web site at [www.adpen.com](http://www.adpen.com) Identify the location of the shipment and Stop Order number if available. The samples are maintained frozen and then sent to ADPEN for testing by overnight carrier with dry ice or blue ice. ADPEN upon receipt will homogenize the samples as needed. Testing of the samples will be done using LC/MS/MS for the four fluoroquinolones and for chloramphenicol if needed. ADPEN can arrange for collection of the samples in any city if needed.



## Reporting

A signed Certificate of Analysis in pdf format will be e-mailed to the customer. Upon prior approval or approval from the customer, ADPEN will e-mail results directly to the State Lab required by customer. Customers should **not** Fax or e-mail the Certificate of Analysis to the State Labs.

## Pricing and Sample Quantity to be Shipped

Matrix Type	Analyte	Sample Quantity	TAT*
Shellfish (Shrimp, Crawfish, Crab)	Chloramphenicol and Fluoroquinolones	12 packs (ea pack minimum 1 lb)	5 days
Fin Fish	Fluoroquinolones	1 case (minimum 12 lbs)	5 days

\*Effective 5/21/07. Rush TAT available please call. Credit card payment is available.

## Other requested FDA Testing Performed by ADPEN:

-*Malachite Green* - performed by HPLC or LC/MS/MS

-*Nitrofurans metabolites* - performed by LC/MS/MS

-*Melamine and related compounds* – performed by LC/MS/MS

## Contact Information

For technical questions, please contact: Rolando Perez, Technical Director, [rp@adpen.com](mailto:rp@adpen.com)

For general questions, please contact: Rebecca Elliott, Customer Service, [mc@adpen.com](mailto:mc@adpen.com)